



e-Scoresheet

CREATED AND DISTRIBUTED BY:



Head Office & Marketing Department:

Via Dell'Elettricista 10, 40138 Bologna - Italy

Software Development & Customer Service:

Via Parmenide 260, 84131 Salerno - Italy

Phone: +39 051 307060

www.dataproject.com

info.dataproject@geniussports.com

Updated to the Release **2022.08.01**

Available for Windows 10, Windows 8.1

Table of contents

1 Introduction	4
1.1 Minimum Requirements	4
1.2 Home Page	4
2 New Match	5
2.1 Check Match	6
3 Match Scoring Window	7
4 Live Match Tools	7
5 Assigning a Point	7
7 Roster	8
8 Service and Team Position	8
9 Starting LINE-UP	9
10 Starting Set	10
11 Substitutions	10
12 Injury	12
13 Undo	13
14 Libero	14
15 Sanctions	15
16 Replay	15
17 Protest	16
18 End of set	16
19 Additional Buttons	16
19.1 Print	16
19.2 Options	16
19.2.1 General	16
19.2.2 Federation Rulese	17
19.2.3 Shortcut	17
19.2.4 Share Data	17
19.2.5 LiteScore	18
19.2.6 Tablet	18
19.2.7 Vis Configuration (FIVB ONLY)	18
19.2.8 Side Panel (FIVB ONLY)	19
19.2.9 Flipboard	20
19.3 History	20
19.4 Set Preview	21
19.5 Manual Changes	21
19.5.1 Other Section	22
20 Video Challenge- Video Verification	23
20.1 Technical Timeout	24
20.2 End Set	24
20.3 Video Challenge Comments	24
21 Comments	25
22 End of Match (For Specific Federations)	25

23 Restore Match..... 27

24 Golden Set 27

25 Print Scoresheet..... 28

25.1 CEV Forms..... 29

26 LiteScore 30

27 Warranty..... 32

CONSUMER PROTECTION..... 32

PROCEDURES TO FOLLOW 32

ADDITIONAL WARRANTY SERVICE 32

1 Introduction

e-scoresheet allows you to automatically enter the information into the volley ball match scoresheet. e-scoresheet has been developed to help the scorer during the match scoring while following all the game phases in the different situations that can occur during a match.

e-SCORESHEET has been developed to guarantee a complete check, reliability and the univocal correspondence of data:

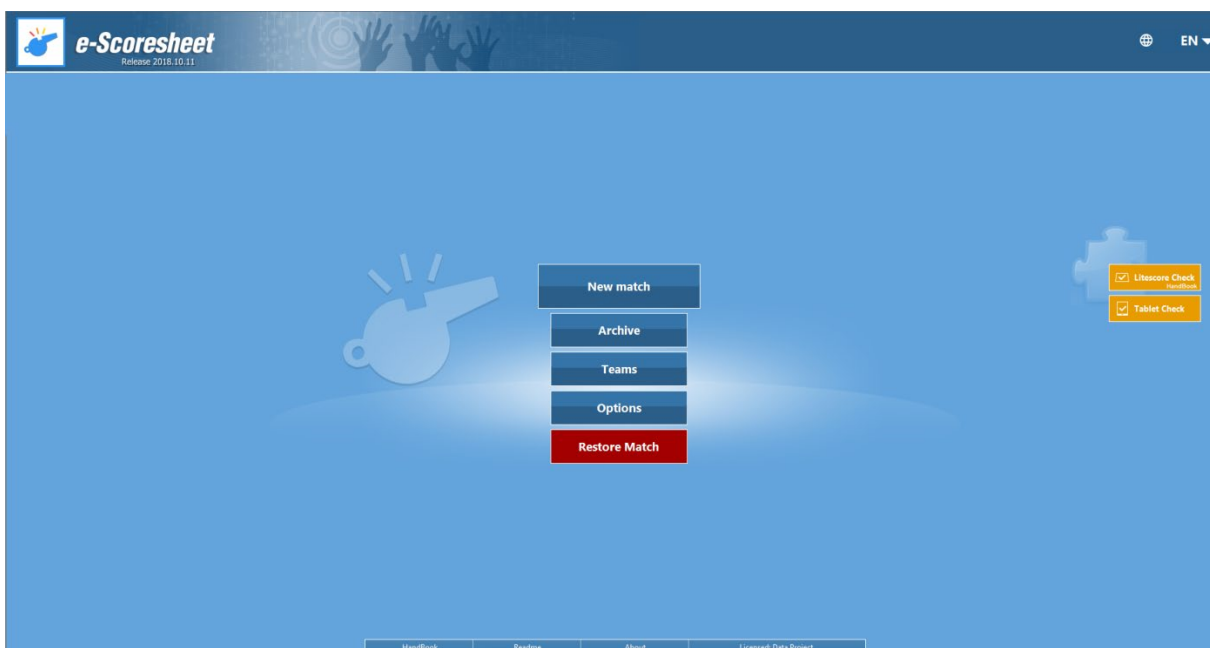
- Referees, Teams, Players and Members are always identified by their own ID number;
- The specific parameters of the competitions are set on a "central level" in order to avoid mistakes and personal initiatives of scorers.

e-Scoresheet covers all the game situations that can happen during a match. At the end of a match the official scoresheet information can be updated on the central database in order to automatically update the tables concerning scores, referees, sanctions, etc.

1.1 Minimum Requirements

- The software can be installed on any personal computer Windows® from 8.1
- Screen 1366x768 recommended (minimum requirements 1200x600)
- CEV version also requires .Net Framework 4.7.2

1.2 Home Page



MATCH MENU

The Match menu is divided into:

- **New match:** to enter a new match
- **Archive:** to open an existing match
- **Litescore:** to connect with Litescore Scoreboard
- **Teams:** this button will display a list of teams previously imported. Teams cannot be modified and are read only.
- **Options:** allows you to define certain options to the program
- **Restore match:** allows you to select a the path on your computer where the incomplete matches will be automatically stored should your PC shut down inadvertently.

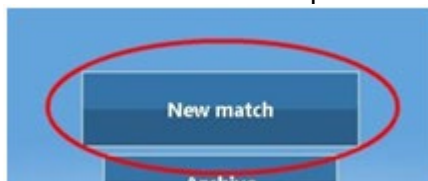
It's possible to modify the software language by clicking on the icon on the right top of the window. This operation will not change the federation language set by default.

ADDITIONAL INFO

- Handbook
- Read me file
- About button
- License permission

2 New Match

To create a new match press the [New Match] button.



When pressed, for some Federations, a wizard will appear guiding the user through the different match options:

- **[Create a match manually]** creates a new match manually; it will be an unofficial match and will not be sent to the Federation
- **[Load an official match]** loads an official match from the website of the Federation
- **[Check an official match]** allows you to check the information entered for an official match (referees, roster, etc...) and the connection to the server.
- **[Load a test match]** to access a test match, supplied by the Federation, and to learn how to use the program.

Please note: you will be asked to select the federation related to the match and enter login and password, provided by the Federations when creating, loading and verifying official matches.

The match notes window will appear once the match has been loaded.

The possibility to change information on the current match, Competition name, Season and Category is reserved only for some Federations (NCAA, CIS, ECVA). Other Federations cannot change this info. Information such as Match number, Day no. and date will be loaded automatically and cannot be changed for official matches. For NCAA, CIS and ECVA the software will show in the middle of the screen the Logo, the name and the Type of competition.

Once you have entered the required information press OK to go to the scouting window.

By clicking on the comments button on the bottom of the screen, you will open up a blank window where you can add any comments. When the match notes are complete click OK to confirm.

In the middle of the screen the logo, the name and type of competition will appear. It is possible to either update or change the competition by clicking on the link in the white box in the centre of the screen.

2.1 Check Match

Some Federations will have an extra feature which will allow them to check a match. This test will check the match information and the connection to the server. Press the New Match Button then select check match and enter login and password. Once you have selected the match this window will appear:

Press the Roster button in the bottom left hand corner of the screen and check the player list and press ok to confirm. The window will now appear as below:

The Test Live match button will appear and it will start flashing, press it and the following message box will appear:

Press Execute Check to run the check:

A message will confirm if the match has been checked successfully.

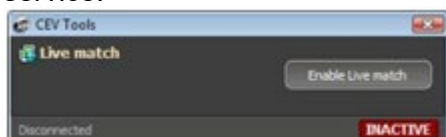
3 Match Scoring Window

When all the information has been entered in the Match notes window press Ok and the Match scoring window will appear.

The only information that will be present in this window will be the names of the teams previously selected in the match notes window. By default the team names will appear on the top part of the screen, the home team on the left hand side and the away team on the right hand side of the window (this can be changed by pressing the **[Switch Side]** button).

4 Live Match Tools

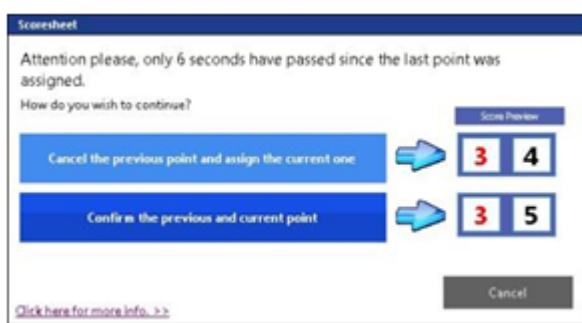
The LIVE MATCH tools button have to be used during a test match and during a live match to send the score to the live match page on the Federation website. Enter login and password when prompted to access the service.



5 Assigning a Point

You can assign a point to the team using the Assign point key or using the function key that has previously been associated to this function.

Press the undo button to remove the assigned point.



If you immediately assign another point a window message will appear advising you that less than 8 seconds have passed since the last point and will give you two options to chose from:

6 Time Out

A time out can be called by a team by clicking the Time out button for that team. The number of time outs will be increased in the cell positioned next to the Time out button on the screen

7 Roster

The first time you launch a new Match, the Software will show you automatically the Roster Selection.



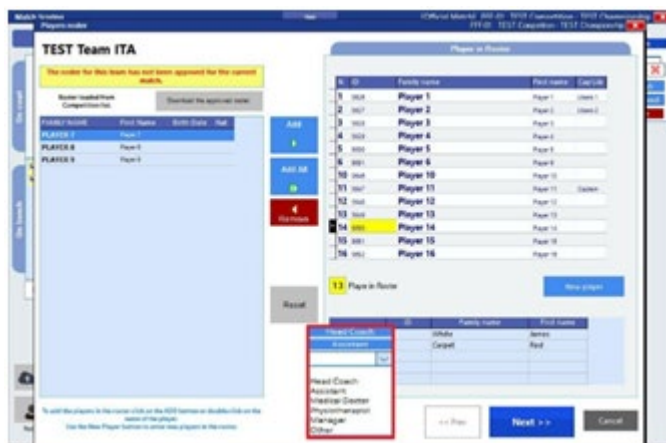
If you want to open another time this window, click on the Roster button positioned on the bottom left hand corner of the match scoring screen.

The below window will be displayed:

In this window you can select the players for the match roster.

You can:

- add
- remove
- enter a new player from the list by selecting the player and pressing the relevant button positioned under the list.



The new player button is used to enter a new player that has not been previously entered in the player database.

The Reset button is used when you want to remove the players in the roster and start inserting them again. Select a player in the list on the left and press ADD to enter the player into the roster; when the player appears in the list on the right enter the shirt number in the first prompted box and specify if that player is a Captain or a Libero. If you have entered a player using the New Player button you can also change family name and name; Some federations can change also Code and Nationality.

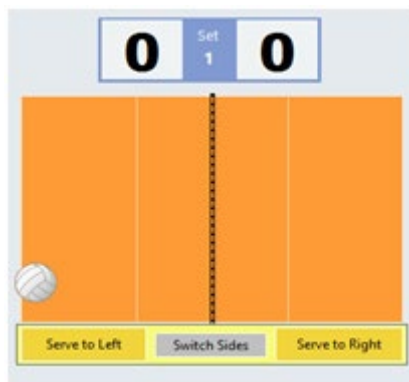
For The Staff on the Bench, choose the role from the Drop Down Menu on the left of the Family Name.

When the players for each team have been selected press the Ok button to confirm.

Some Federations have to confirm the list by using a team login and password.

8 Service and Team Position

By default the serve will be applied to the team on the left hand side of the court. To change it press Serve to Left or Serve to Right to assign the serve to the correct team. The serve will be defined by a white ball positioned in the cell corresponding the team who will serve first. Service and team starting position have to be assigned before the set start.



[Switch side] button is used to change the position of the teams on the court.

9 Starting LINE-UP

Click on the LINE-UP button on the bottom left hand corner to define and enter the starting line-up on the court.

NOTE: when pressing the LINEUP button a message window will appear to warn you that you have not enabled backup if you have not selected where you want to backup the match, press yes or no according to your requirements.

A second message window will appear asking you to make sure that the court position and the serving team have been set up correctly.

The below window will be then displayed:

To position the players on the court you can:

- select the players from the list and drag them using the mouse in the cell that represents the position on the court
- click on the cell and enter the number or the player that will be positioned in that cell
- Double Click on the players to add them by sequence

To modify the initial line-up you can:

- click on the RESET button positioned under the court image to remove all six players

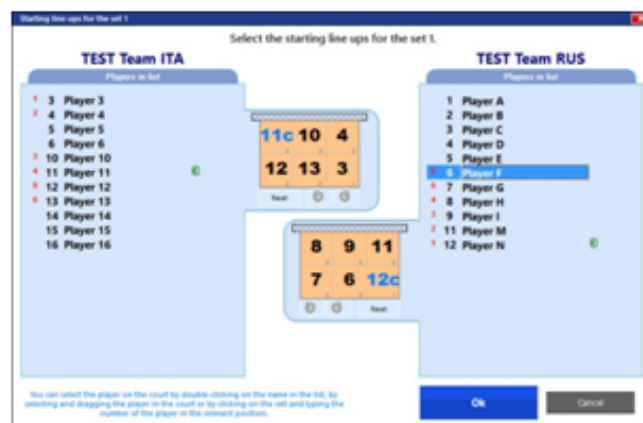
click on the number of the player in the cell and modify it by using the keyboard (this option is used when you don't want to change the full line-up).

Another way of entering the initial line-up is to double click on the player in the list and he will automatically be position on the court in the position marked with "1". The players will be entered on the court following the rotation system from 1 to 6.

You can remove a player previously positioned on the court by double clicking on the player in the list; he will automatically be removed from the court and you will be able to enter another player.

When the option "Manage Captain on court" is enable, if the Captain was not positioned on the court a window will appear asking you to assign Captain title to one of the six players on the court. This is because a captain must always be present in the line up as he is the only one who can communicate with the referee.

Click on OK to confirm.



If you have enabled the DATA VIDEO option, a Setter Designation window will appear where you have to select the position of the setter.

Press OK to continue.

The initial line-up will be displayed in the match scoring window.



10 Starting Set

The match scoring window will display the players on the court and those on the bench.

Press the START SET button to start and a window will be displayed where you can select the official starting time or the current time (you can change the current time by editing on your keyboard):



Official time is the time you previously entered in the Notes Window. The official time for the second set will therefore be the duration of the first set plus 3 minutes for break (or according to the regulation). Real time is the real time shown on your computer.

At the start of a set you have to choose what time you want to use; if there is a difference of 5 minutes between the official time and the real time, the program will automatically disable the official time button and you can only use the real time button.



Press Start set when you have selected the time you want to use. The match scoring window will appear as shown and several new buttons will appear on the screen.

The yellow button "START RALLY" will appear if you have enabled the Data Video Option or Tablet Connected. This button must be pressed at the start of every rally.

11 Substitutions

You can perform a substitution in one of the following ways:

- by pressing the substitution button
- by using the associated function key
- by clicking in the players list
- drag and drop from the bench to the court

the following window will be displayed:



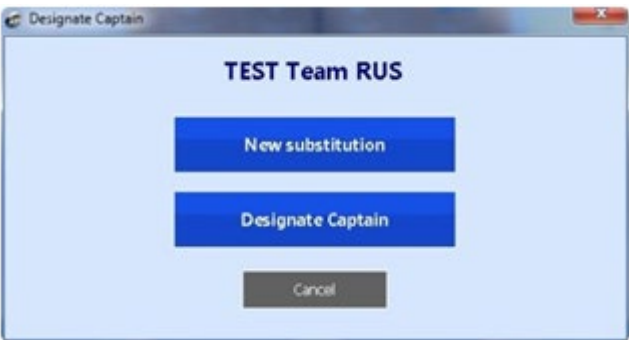
A substitution can be performed during a match.

Select a player you want to substitute from the players on court list (on the left hand side) and select a player from the players on the bench (on the right hand side). Press the Run the substitution button on the bottom right hand side to confirm. A window will appear displaying, graphically, the substitution showing you the player that will leave the court and the one that is entering the court.



The number of substitutions will be increased in the cell positioned next to the Substitution button.


If the player that has been substituted is the captain, and another captain has not been designated, the main screen will appear with the following error message:



Click on the link in the small yellow window to assign captain role to one of the players on court.



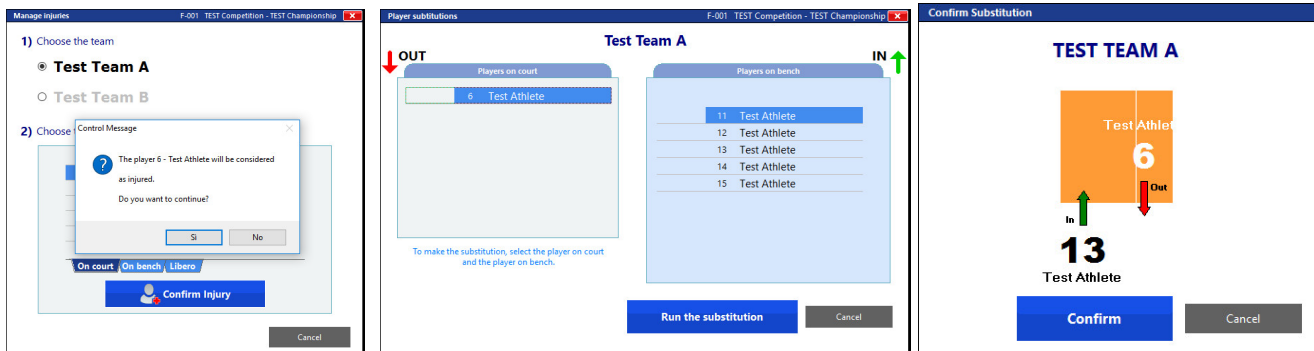
12 Injury

Click on the INJURY  button on the bottom right hand corner of the screen. In the Manage injuries window you will have to select the team of the injured player and then the injured player.

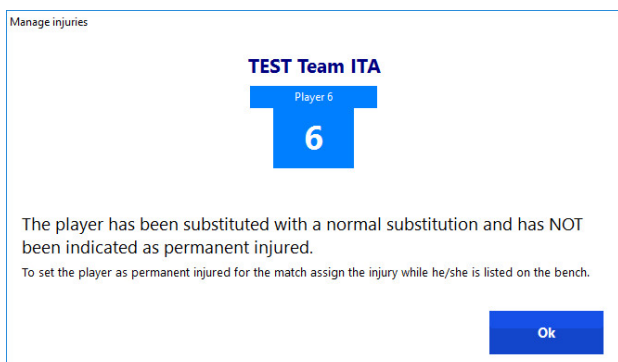
You can choose from the players on court or the Libero.

Confirm by pressing Confirm Injury. A message will appear asking you to confirm the injury again, press yes to continue.

- The player substitutions window will be displayed where you can select a player from the bench that will substitute the injured player. Confirm by pressing Run the substitution.

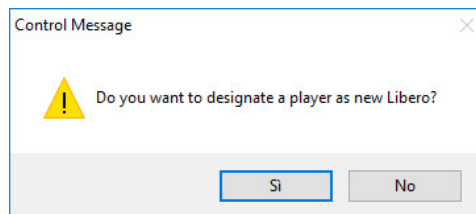
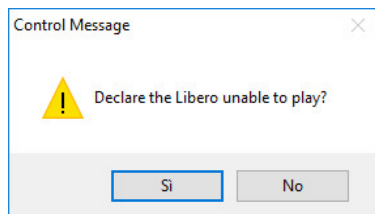


If, according to the rules, the player can be substituted regularly a normal substitution will be performed. In this case the player will not be marked as permanent injured.



- If a Player is permanent injured, Select the player from the Bench then confirm the Injury.
- If the Player cannot be substituted with a normal substitution, He/she will be considered automatically permanent injured.

- If the Libero player is injured this window will appear where you have to select a player to replace the injured Libero, by following the advertising windows:



13 Undo

The UNDO button is used to cancel the previous action.

A window will appear when you press it asking you to confirm the action that will be cancelled.

14 Libero

A Libero In button is positioned on either side of the screen, one button for each team.

By clicking Libero In a window will appear asking you to choose the player that will exit the court :



the Libero will enter the court and his number will appear in the relative zone in a yellow shape (as shown in image); the number of the players that has exited the court will appear, in small, next to the yellow shape in the same zone (see image).



The libero player can be replaced regularly. Click on Libero Out to remove the player from the court.

The exchange libero button is used to swap the libero with the other Libero on the bench.

In the option window it is possible to:

- enable the function to automatically suggest when to enter the libero
- enable the function to automatically suggest when to exit the libero

The libero In and Libero Out window will appear in the part of the screen relating to the team of the Libero.



15 Sanctions



Click on the Sanction button to call or assign a sanction during a match.
This window will be displayed:

Select the team you want to sanction.

In this window you can select:

- Improper request (an improper request is sent to the team)
- Delay penalty (a warning is sent to the team)

If the sanction is being assigned to a certain player or technical staff, select the player and press the relevant button: foul, expel or disqualify.

- If you assign a Warning, The Software will display a window with the following message:
"Player/Coach/Manager etc.has been sanctioned with Warning"
- If you assign a foul, a red card will appear next to the name of the player/technical staff that has received the foul and a point will automatically be assigned to the opposite team.
- If you disqualify or expel a player on the court you will be asked to select a player from the bench to substitute the sanctioned player.
- If you disqualify/expel a player/technical staff a red card will appear next to the name of the sanctioned player/technical staff.

16 Replay

The REPLAY button is used to undo or replay a rally should the referee change his mind about a rally.

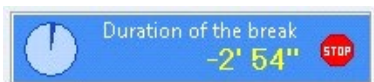
17 Protest

The protest button, positioned under each team name is used to call out a protest during a match. When pressed the set number and the score at that moment will appear below the protest button relating to the team who has called out a protest.

18 End of set

The end of a set will be determined by the assignment of the last point. At the end of a set a window will appear with the set summary displaying the score total for each team, the time when the set ended and the duration expressed in minutes. Press Confirm the end of the set button to continue.

When you confirm the end of the set, a counter will appear on the bottom left of the screen that will countdown to the start of a new set. The countdown can be interrupted at any time by pressing the stop button in the counter box.



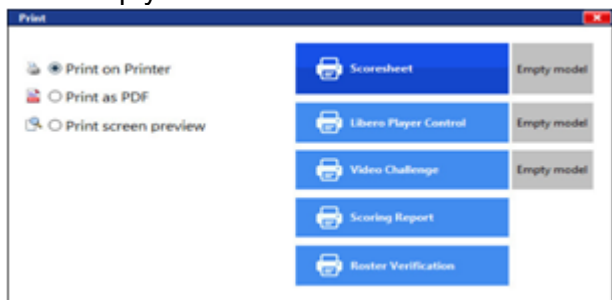
When you press STOP or the time runs out, you will be asked to enter the line up again and start the set when everything has been finalised.

19 Additional Buttons

In the match scoring window on the bottom right hand side you will find the following buttons:

19.1 Print

the print button allows you to print the score sheet and pre game. You can choose to print directly, print the document in a Pdf format or print a preview first. You can also choose to either print the complete score sheet or an empty one.



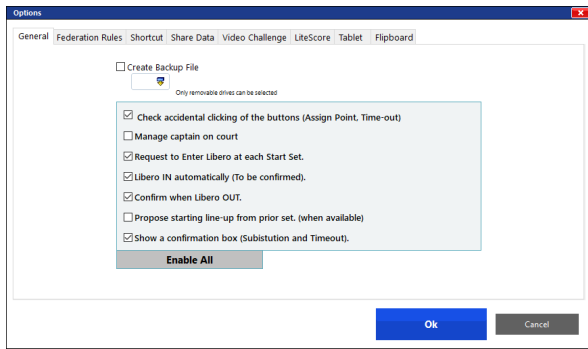
19.2 Options

this button directs you to the program general option window, divided into three sections, where you can set certain functions:

19.2.1 General

- Enable live match: to enable or disable the live match function.
- Create Backup file: to create a backup of the match and you can only choose a removable drive (i.e. USB pen drive).
- Check accidental clicking of the buttons: blocks a button for 3 seconds after it has been pressed to avoid accidental clicking.
- Libero In automatically: the program will automatically ask you if you want to enter the Libero on the court when the opposite team has the serve.

- Confirm when libero Out: if the libero is positioned on the first line the program will automatically ask you to exit the libero.
- Propose starting line up, proposes the line up of the previous match.



19.2.2 Federation Rulese

To Increase or reduce the break time between 2nd and 3rd set.

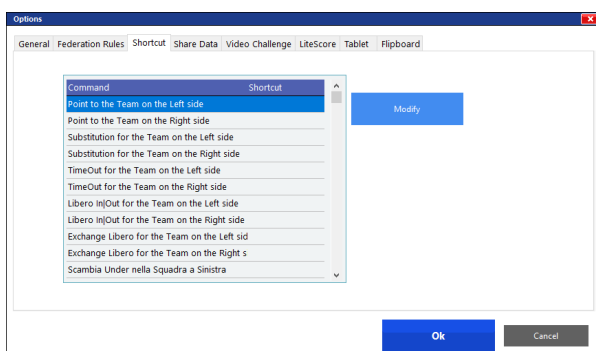


Federation Rules for FIVB (ONLY): Duration of the break between 2nd and 3rd, Number and duration of Technical Time Out, number of Time Out for each team.



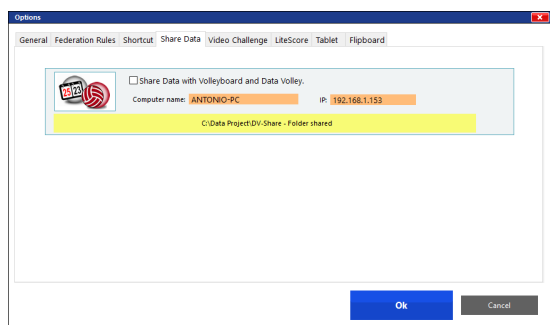
19.2.3 Shortcut

to assign a key or a key combination to a certain game phase. Press the Modify button and select the key.



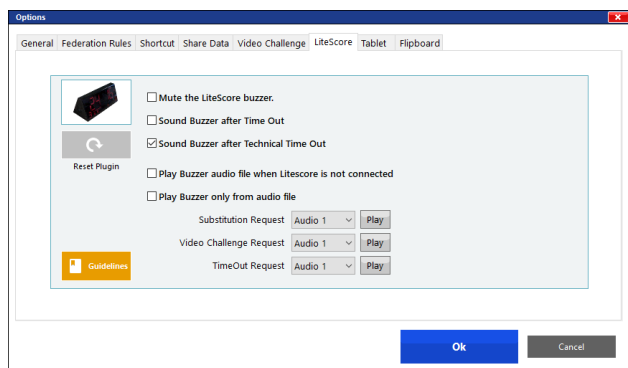
19.2.4 Share Data

- Computer name and IP address must be entered in the other programs to set data sharing
- enables data sharing with Share Data
- enables events with Share Data
- enables data sharing with e-Scoresheet Tablet



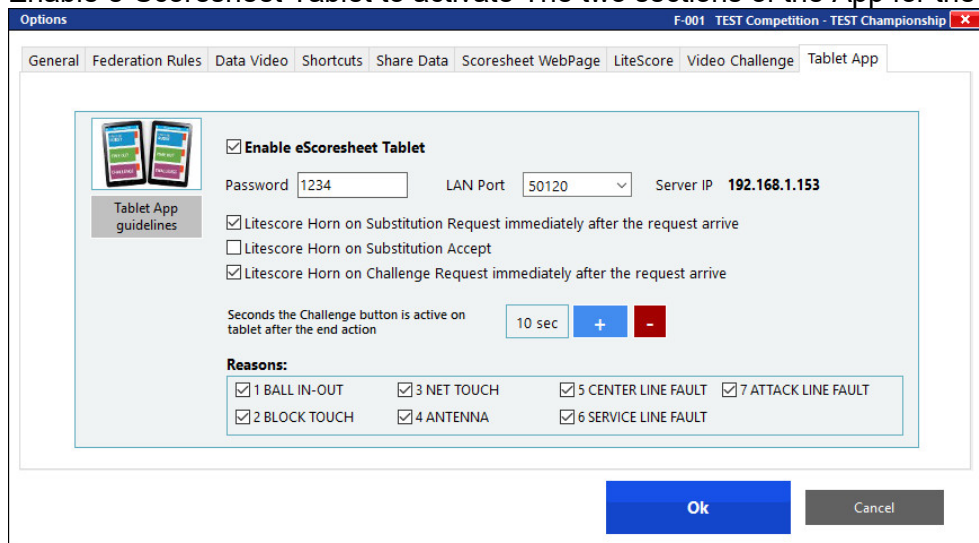
19.2.5 LiteScore

In this section it's possible to set the lite score options.



19.2.6 Tablet

Enable e-Scoresheet Tablet to activate The two sections of the App for the Benches and for the referee.



Enabling this option allows data connection with the e-Scoresheet Tablet App for the modules Bench*, Referee and Press.

e-Scoresheet shares with the Tablet Apps details of scores, lineups, time-outs, substitutions and video verifications.

***Bench module and related options are availables only for the federations with special agreements.**

19.2.7 Vis Configuration (FIVB ONLY)

Enable this option to upload Scoresheet Data to the FIVB Database.

Options

General Federation Rules Shortcut Share Data Video Challenge LiteScore Tablet VIS Configuration Side Panel Flipboard

Local instance

☐ Use local VIS instance

Data upload to VIS

Username VISTEST

Password *****

Login

Ok Cancel

To upload Data, login by entering FIVB Username and Password.

It's possible to select a local VIS instance if needed

Local instance

☒ Use local VIS instance

Ip Port

(i.e. 192.168.1.1) (i.e. 8080)

To activate the local service, please specify IP and password.

19.2.8 Side Panel (FIVB ONLY)

Enable Side Panel to display on your screen the following options:

- Seconds after a "Point Assigned"
- Seconds after a "Start "Rally"

Options F-001 Volleyball Tournament test

General Federation Rules Shortcuts Share Data Scoresheet WebPage LiteScore Video Challenge Tablet App FIVB Login Side Panel

Enable Side Panel

Test

Screen A MAIN

Change

☐ Keep the elapsed seconds from last point after substitutions and challenge

☐ Hide Timer after game breaks (substitutions and challenge)

POINT ASSIGNED ☒ Became red after 7 seconds and disappear after 0 use 0 to keep the timer on screen

START RALLY ☒ Became red after 8 seconds and disappear after 10

Ok Cancel

e-Scoresheet will display a new button in the lower right side of the Main Screen

Side Panel

Test

Countdown

Clean

If the e-Scoresheet Tablet App for Benches and Referee is activated, the software will display on the Side Panel: Substitution, Challenge and TimeOut Requests.

OUT
12
IN
6

Test Team B
CHALLENGE

Test Team A
TIMEOUT 1

19.2.9 Flipboard

Enable this option to display the Flipboard on a secondary screen .

OptionsLKA11: TEST Competition - TEST Championship

GeneralLMLData VideoShortcutShare DataVideo ChallengeLifeScoreTabletFlipboard

2116

OUT

15

IN

12

2

Screen AMAIN

Sponsor (Text)

Change

☐ Keep the Home Team on the left

☒ Mirror team position

Ok

Cancel

TEST Team A

TEST Team B

0

4

2

0

DataProject.com

Users can set the display area for the flipboard window using the Change button below the preview area. It is possible to specify a text for the sponsor that'll be shown below the score. Furthermore users can choose how to handle the teams positions; Keep the home team on the left or display each team according to its position on the court (or invert it).

19.3 History

Click on this Button to display the report of the match:



In this same window, in the second tab “set information” you will find the match history filtered by substitution, sanction and injury.

This information is entered automatically by the program and cannot be changed manually.



19.4 Set Preview

to view a breakdown of the set in the following window of the FIVB form:

Set Preview														Move on secondary screen		X		
S E T 1	(A) Test Team A							Start: 00.00	S	(B) Test Team B							End:	R
	I	II	III	IV	V	VI	Points		I	II	III	IV	V	VI	Points			
	4	6	7	8	9	10			6	7	8	9	10	11				

19.5 Manual Changes

It is used to manually modify the match. The following window will be displayed:



This window is divided into different sections:

TIME OUT: It is possible to assign the time outs at a particular score for each team.

POINTS: increase or decrease the match points

SUBSTITUTIONS: It is possible to manually change the substitutions. By clicking on the icon next to substitutions the following window will appear:

Here you can associate the number of the player that entered and the one that was substituted, the score when he entered and the score when he left the court.

CURRENT LINE UP



In this section you can:

- change the line up
- rotate the line up
- set starting line up
- change team sides
- assign the serve

19.5.1 Other Section

In this section you can modify team sanctions and team rosters:

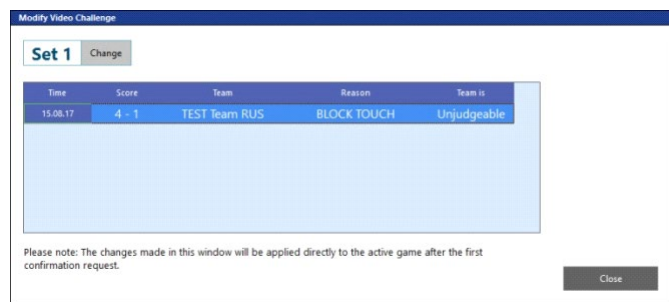
MODIFY PENALTY: to manually modify penalties in the following window



MODIFY TEAM ROSTERS: to manually modify the team rosters in the following window



MODIFY CHALLENGE: to manually modify a Challenge Request



INTERRUPT MATCH: enter the information about match interruption

Video Challenge

Test Team B

The rally is ended

current score **2** **0**

1) reason 0 UNDEFINED

2) camera Es. 2, 6

3) camera 0 UNDEFINED

1 BALL IN-OUT

2 BLOCK TOUCH

3 NET TOUCH

4 ANTENNA

5 CENTER LINE FAULT

6 SERVICE LINE FAULT

7 ATTACK LINE FAULT

8 FOUR HITS

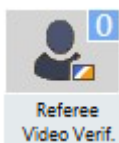
9 FLOOR TOUCH

Confirm Cancel

☒ The team is wrong

☐ The team is right

☐ Can't verify/judge based on the video



The first Referee can also ask for a Video Check. The scorekeeper press the relative button.

20.1 Technical Timeout

If a video verification is requested, the scorekeeper will press the button “End of Time-out” and click to the button “Video Verification.

If the request were to confirm the referee decision the time out will be resumed.

End of set summary

22 Test Home

25 Test Guest

Set ended at 17.13

Set duration (min.) 33

Confirm end of set Cancel

Request Video Verification

20.2 End Set

Assigning the winning point the mask of END SET will be displayed. If the team that lost the set would have required video verification available you will see a new button as shown:

Comments

Scoresheet Notes Technical Notes Video Verification

Set1 (18-19) request video check: Argentina, team is right.

Set1 (18-19) request video check: 1st Referee.

Set1 (20-20) request video check: 1st Referee.

Set1 (20-20) request video check: Brazil, team is wrong.

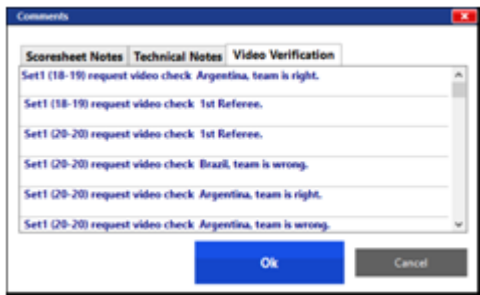
Set1 (20-20) request video check: Argentina, team is right.

Set1 (20-20) request video check: Argentina, team is wrong.

Ok Cancel

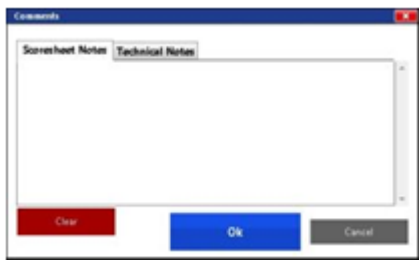
20.3 Video Challenge Comments

At the end of the video verification a note is automatically generated in the Match comments:



21 Comments

This button directs you to the comments window



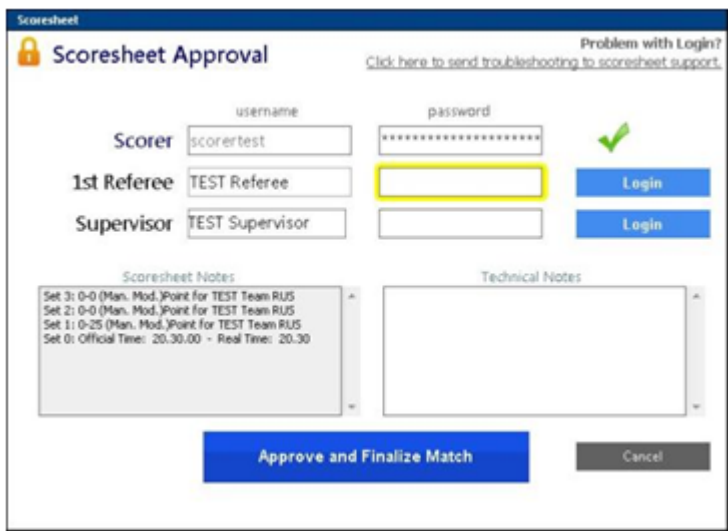
In Scoresheet notes you can add and modify all the comments you want.
The technical notes will be a breakdown of all the manual changes made during the match, they are read only and cannot be modified.

22 End of Match (For Specific Federations)

At the end of the match (when all the sets are finished and when one of the two teams has won).



When you confirm the end of the last set the following button will appear in the centre of the screen:



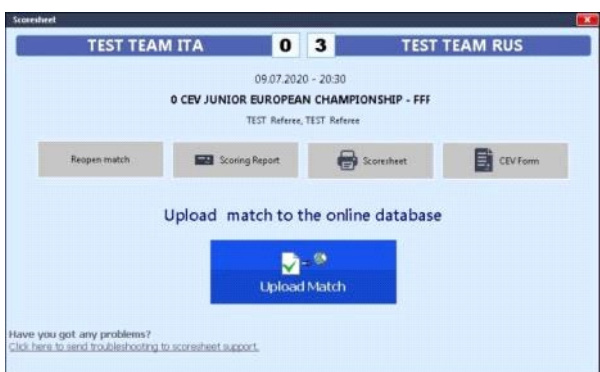
Press the Scoresheet approval button and the following window will be displayed:
in this window, according to the Federation, the referee and the supervisor will enter the passwords to confirm the end of the match and it will be possible to view the technical comments and add additional notes if required.

The technical comments are the manual changes that are made during a match and cannot be changed.

By pressing OK you will be asked for the destination folder where you want to save the match.



When the destination folder has been selected the program will elaborate and display the following window:



This window displays the tams and the final scores with the date, season and name of the referee and allows you to perform the following operations:

- upload match
- print scoresheet

- It is mandatory for specific Federations to send the match to the server at the end of the game.

- If the match has not been approved or sent, the following window will appear with the warning message to say it has not been sent.



23 Restore Match

This function is helpful when there are problems on the computer and you need to restore a match on another computer.

When you enable this function in the Options window, after every rally the program will automatically save the full match on the USB removable drive.

If you need to restore a match connect the USB drive to the computer and press Restore Match in the main window.

The following window will appear, press Restore and the program will open the match from where it left off.



24 Golden Set

Click on the "Play Golden Set" button at the end of the match in order to play a golden match, once a match has been played.



The Match notes window will appear and the Match Note will state GS which indicates you are about to open a Golden Set.



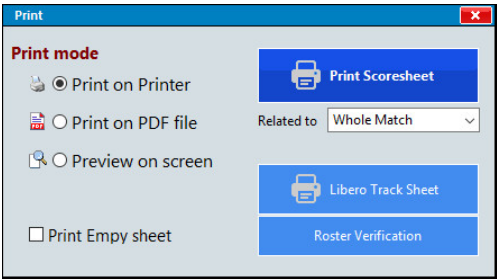
The match will start directly from the 5th set and you will have to confirm Players and Line-Up. All team and match information will automatically be loaded from the previously selected match .



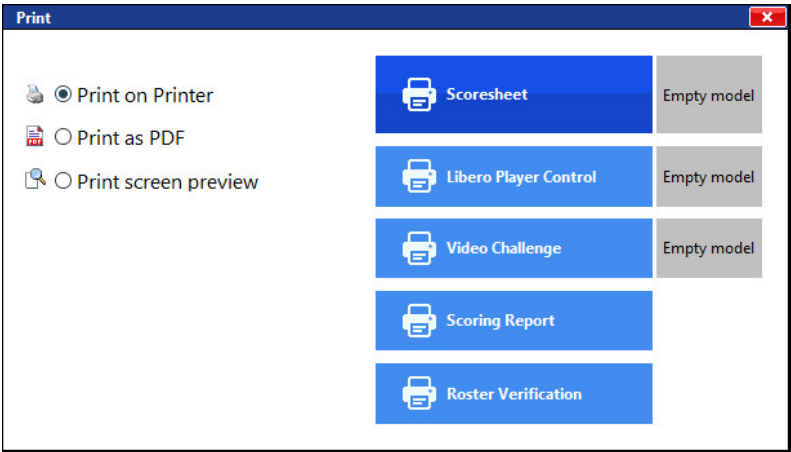
At the end of the match, approving the golden set and sending it, it is automatically approved and also sent the previous match.

25 Print Scoresheet

This button allows you to print the scoresheet.
For the NCAA Women the window will be the following:



For all other teams and Federations, the window will be the following:



Here is an example of the scoresheet that is generated:

Competition: EUROPEAN LEAGUE 2008 Match no: ELF 42 Day: 1 Division: Men's Floorball: Semi Finals Category: Senior

City: BUREA Country: Turkey Hall: Ataturk Spor Salonu Date: 10 Jul 2008 Time: 15.30.00

NETHERLAND - TURKEY

Time	1	2	3	4	5	6	7	8	9	10	11	12	13	14	15	16	17	18	19	20	21	22	23	24	25	26	27	28	29	30
1																														
2																														
3																														
4																														
5																														
6																														
7																														
8																														
9																														
10																														
11																														
12																														
13																														
14																														
15																														
16																														
17																														
18																														
19																														
20																														
21																														
22																														
23																														
24																														
25																														
26																														
27																														
28																														
29																														
30																														

Printed by: Information Systems by CEV - Coordination Competition de Volleyball

CEV European League

RESULTS

Match	Home	Away	Score	Time
1	NETHERLAND	TURKEY	1-0	15.30

OFFICIALS

Referee	Line Judge	Scorer
C. BLANCKE (FRA)	AC. VAN DER BEEK (NLD)	M. LANGENHORST (GER)
T. DAVOISE (LUX)	D. STEENHARD (BEL)	

NETHERLAND

No.	Name of the player	Pos.	Card no.
1	BACKHEIJER Ronald	Goal	00003
2	C. VAN KATWIJCK Tjallingii	Def	14470
3	VAN DIJK Rijk	Def	13273
4	BAUWERDINK Jeroen	Def	11990
5	SWOFFE Jan-Edwin	Def	10436
6	VLAM Tje	Def	12053
7	KLAVERKAMP Theo	Def	10942
8	LORENTS LARS	Def	14470
9	SWANENBURG Jeroen	Def	14470
10	VAN DER MEER Bart-Jan	Def	10436
11	STOLTE Wouter	Def	21019

OFFICIALS

Referee	Line Judge	Scorer
C. BLANCKE (FRA)	AC. VAN DER BEEK (NLD)	M. LANGENHORST (GER)
T. DAVOISE (LUX)	D. STEENHARD (BEL)	

TURKEY

No.	Name of the player	Pos.	Card no.
1	C. KIRAL Ulas	Goal	13228
2	SAHIN Naci	Def	00003
3	DURULUT Emrah	Def	10094
4	GUZ Mustafa	Def	03216
5	ERCI Arslan	Def	12157
6	DUNGE Emrah	Def	14527
7	KURT Ali Kemal Cem	Def	11042
8	COKUGUR	Def	17105
9	SAHIN Naci	Def	12257
10	EMELT Ibrahim	Def	25073
11	SAHIN Naci	Def	10041
12	DAGCI Caner	Def	10015

OFFICIALS

Referee	Line Judge	Scorer
C. BLANCKE (FRA)	AC. VAN DER BEEK (NLD)	M. LANGENHORST (GER)
T. DAVOISE (LUX)	D. STEENHARD (BEL)	

PRINT PREGAME

This button allows you to print a preview of the scoresheet:

Competition: EUROPEAN LEAGUE 2008 Match no: ELF 42 Day: 1 Division: Men's Floorball: Semi Finals Category: Senior

City: BUREA Country: Turkey Hall: Ataturk Spor Salonu Date: 10 Jul 2008 Time: 15.30.00

NETHERLAND - TURKEY

PRE-GAME SCORESHEET

No.	Name of the player	Pos.	Card no.
1	BACKHEIJER Ronald	Goal	00003
2	C. VAN KATWIJCK Tjallingii	Def	14470
3	VAN DIJK Rijk	Def	13273
4	BAUWERDINK Jeroen	Def	11990
5	SWOFFE Jan-Edwin	Def	10436
6	VLAM Tje	Def	12053
7	KLAVERKAMP Theo	Def	10942
8	LORENTS LARS	Def	14470
9	SWANENBURG Jeroen	Def	14470
10	VAN DER MEER Bart-Jan	Def	10436
11	STOLTE Wouter	Def	21019

OFFICIALS

Referee	Line Judge	Scorer
C. BLANCKE (FRA)	AC. VAN DER BEEK (NLD)	M. LANGENHORST (GER)
T. DAVOISE (LUX)	D. STEENHARD (BEL)	

TURKEY

No.	Name of the player	Pos.	Card no.
1	C. KIRAL Ulas	Goal	13228
2	SAHIN Naci	Def	00003
3	DURULUT Emrah	Def	10094
4	GUZ Mustafa	Def	03216
5	ERCI Arslan	Def	12157
6	DUNGE Emrah	Def	14527
7	KURT Ali Kemal Cem	Def	11042
8	COKUGUR	Def	17105
9	SAHIN Naci	Def	12257
10	EMELT Ibrahim	Def	25073
11	SAHIN Naci	Def	10041
12	DAGCI Caner	Def	10015

OFFICIALS

Referee	Line Judge	Scorer
C. BLANCKE (FRA)	AC. VAN DER BEEK (NLD)	M. LANGENHORST (GER)
T. DAVOISE (LUX)	D. STEENHARD (BEL)	

25.1 CEV Forms

This window appears when you press the CEV FORM button only for CEV Competitions.

CEV Tools

1 / 17/10/2008

Preview

Print

Pdf file

 EUROPEAN LEAGUE 2008 Semi Finals 2008 MATCH RESULT REPORT	CEV Form CL-12																																																																																																					
<p>The hosting CLUB must communicate the result of the match to the CEV Office immediately following the end of the match by fax (at the latest 1/2 an hour after the end of the match)</p> <p>For each delay or failure in communicating the result, the hosting Club will be liable to a fine provided in the Official Regulations (Table of Financial Sanctions, Chapter 8, Item 1.11) amounting to 700,- Euros!!!</p> <p style="text-align: center;">FAX : [**-352] 25.46.46.46</p>																																																																																																						
<table style="width: 100%; border: none;"> <tr> <td style="width: 30%;">Venue: BURSA</td> <td style="width: 20%;">Date: 19 Jul 2008</td> <td style="width: 20%;">Time: 17.12</td> <td style="width: 30%;"></td> </tr> <tr> <td>Match N°: ELF-02</td> <td>Hall: Ataturk Spor Salonu</td> <td>Pool/Phase: Semi Finals</td> <td>Spectators: </td> </tr> </table>		Venue: BURSA	Date: 19 Jul 2008	Time: 17.12		Match N°: ELF-02	Hall: Ataturk Spor Salonu	Pool/Phase: Semi Finals	Spectators: 																																																																																													
Venue: BURSA	Date: 19 Jul 2008	Time: 17.12																																																																																																				
Match N°: ELF-02	Hall: Ataturk Spor Salonu	Pool/Phase: Semi Finals	Spectators: 																																																																																																			
HOME TEAM: NETHERLAND	RESULT	VISITING TEAM: TURKEY																																																																																																				
<table border="1" style="width: 100%; border-collapse: collapse;"> <thead> <tr> <th>N°</th> <th>C/I</th> <th>Name of Player</th> </tr> </thead> <tbody> <tr><td>1</td><td></td><td>RADENMAKER Roland</td></tr> <tr><td>3</td><td>C</td><td>VAN HARSKAMP Yannick</td></tr> <tr><td>8</td><td></td><td>VAN DEIK Kay</td></tr> <tr><td>10</td><td></td><td>RAUWERDINK Jeroen</td></tr> <tr><td>11</td><td></td><td>SNIPPE Jan-Willem</td></tr> <tr><td>13</td><td></td><td>VLAAM Tjje</td></tr> <tr><td>14</td><td></td><td>KLAPWINK Niels</td></tr> <tr><td>15</td><td></td><td>LORSHEID Lars</td></tr> <tr><td>18</td><td></td><td>MAAN Jelte</td></tr> <tr><td>19</td><td>L</td><td>MAST Mathijs</td></tr> <tr><td>20</td><td></td><td>VAN DER MARK Bart-Jan</td></tr> <tr><td>22</td><td></td><td>STOLTZ Wouter</td></tr> </tbody> </table>	N°	C/I	Name of Player	1		RADENMAKER Roland	3	C	VAN HARSKAMP Yannick	8		VAN DEIK Kay	10		RAUWERDINK Jeroen	11		SNIPPE Jan-Willem	13		VLAAM Tjje	14		KLAPWINK Niels	15		LORSHEID Lars	18		MAAN Jelte	19	L	MAST Mathijs	20		VAN DER MARK Bart-Jan	22		STOLTZ Wouter	<table border="1" style="width: 100%; border-collapse: collapse;"> <thead> <tr> <th colspan="2">Sets Won</th> </tr> <tr> <th>HOME TEAM</th> <th>VISITING TEAM</th> </tr> </thead> <tbody> <tr><td>3</td><td>1</td></tr> <tr><td>Set 1</td><td>21</td></tr> <tr><td>Set 2</td><td>19</td></tr> <tr><td>Set 3</td><td>33</td></tr> <tr><td>Set 4</td><td>16</td></tr> <tr><td>Set 5</td><td></td></tr> <tr><td>TOTAL</td><td>89</td></tr> </tbody> </table> <table border="1" style="width: 100%; border-collapse: collapse;"> <tr> <td>1st Coach: BLANGE</td> <td>2nd Coach: PARSINS</td> </tr> <tr> <td>1st Referee: GRILL David</td> <td>2nd Referee: PASQUALI Fabrizio</td> </tr> </table>	Sets Won		HOME TEAM	VISITING TEAM	3	1	Set 1	21	Set 2	19	Set 3	33	Set 4	16	Set 5		TOTAL	89	1st Coach: BLANGE	2nd Coach: PARSINS	1st Referee: GRILL David	2nd Referee: PASQUALI Fabrizio	<table border="1" style="width: 100%; border-collapse: collapse;"> <thead> <tr> <th>N°</th> <th>C/I</th> <th>Name of Player</th> </tr> </thead> <tbody> <tr><td>1</td><td>C</td><td>KIZYAK Ulas</td></tr> <tr><td>5</td><td>L</td><td>SAHIN Nuri</td></tr> <tr><td>6</td><td></td><td>DURGUT Ersin</td></tr> <tr><td>8</td><td></td><td>GUC Volkan</td></tr> <tr><td>12</td><td></td><td>EKSI Arslan</td></tr> <tr><td>14</td><td></td><td>DUNGE Erhan</td></tr> <tr><td>17</td><td></td><td>KURTAR Ismail Cem</td></tr> <tr><td>18</td><td></td><td>CIN Kadir</td></tr> <tr><td>19</td><td></td><td>BARIS Fatih</td></tr> <tr><td>20</td><td></td><td>EMET Ibrahim</td></tr> <tr><td>23</td><td></td><td>BATUR Emre</td></tr> <tr><td>24</td><td></td><td>DAGCI Cüneyt</td></tr> </tbody> </table>	N°	C/I	Name of Player	1	C	KIZYAK Ulas	5	L	SAHIN Nuri	6		DURGUT Ersin	8		GUC Volkan	12		EKSI Arslan	14		DUNGE Erhan	17		KURTAR Ismail Cem	18		CIN Kadir	19		BARIS Fatih	20		EMET Ibrahim	23		BATUR Emre	24		DAGCI Cüneyt
N°	C/I	Name of Player																																																																																																				
1		RADENMAKER Roland																																																																																																				
3	C	VAN HARSKAMP Yannick																																																																																																				
8		VAN DEIK Kay																																																																																																				
10		RAUWERDINK Jeroen																																																																																																				
11		SNIPPE Jan-Willem																																																																																																				
13		VLAAM Tjje																																																																																																				
14		KLAPWINK Niels																																																																																																				
15		LORSHEID Lars																																																																																																				
18		MAAN Jelte																																																																																																				
19	L	MAST Mathijs																																																																																																				
20		VAN DER MARK Bart-Jan																																																																																																				
22		STOLTZ Wouter																																																																																																				
Sets Won																																																																																																						
HOME TEAM	VISITING TEAM																																																																																																					
3	1																																																																																																					
Set 1	21																																																																																																					
Set 2	19																																																																																																					
Set 3	33																																																																																																					
Set 4	16																																																																																																					
Set 5																																																																																																						
TOTAL	89																																																																																																					
1st Coach: BLANGE	2nd Coach: PARSINS																																																																																																					
1st Referee: GRILL David	2nd Referee: PASQUALI Fabrizio																																																																																																					
N°	C/I	Name of Player																																																																																																				
1	C	KIZYAK Ulas																																																																																																				
5	L	SAHIN Nuri																																																																																																				
6		DURGUT Ersin																																																																																																				
8		GUC Volkan																																																																																																				
12		EKSI Arslan																																																																																																				
14		DUNGE Erhan																																																																																																				
17		KURTAR Ismail Cem																																																																																																				
18		CIN Kadir																																																																																																				
19		BARIS Fatih																																																																																																				
20		EMET Ibrahim																																																																																																				
23		BATUR Emre																																																																																																				
24		DAGCI Cüneyt																																																																																																				
<table style="width: 100%; border: none;"> <tr> <td style="width: 30%; vertical-align: top;"> Substitutes <table border="1" style="width: 100%; border-collapse: collapse;"> <tr><td>1</td><td>2</td><td>3</td><td>4</td><td>5</td><td>6</td></tr> <tr><td>7</td><td>8</td><td>9</td><td>10</td><td>11</td><td>12</td></tr> <tr><td>13</td><td>14</td><td>15</td><td>16</td><td>17</td><td>18</td></tr> <tr><td>19</td><td>20</td><td>21</td><td>22</td><td>23</td><td>24</td></tr> </table> </td> <td style="width: 40%; vertical-align: top;"> STARTING PLAYERS <table border="1" style="width: 100%; border-collapse: collapse;"> <thead> <tr> <th>Sets</th> <th>I</th> <th>II</th> <th>III</th> <th>IV</th> <th>V</th> <th>VI</th> </tr> </thead> <tbody> <tr><td>1</td><td>20</td><td>12</td><td>18</td><td>24</td><td>8</td><td>23</td></tr> <tr><td>2</td><td>12</td><td>18</td><td>24</td><td>8</td><td>23</td><td>20</td></tr> <tr><td>3</td><td>20</td><td>12</td><td>18</td><td>14</td><td>8</td><td>23</td></tr> <tr><td>4</td><td>12</td><td>18</td><td>14</td><td>8</td><td>17</td><td>20</td></tr> <tr><td>5</td><td></td><td></td><td></td><td></td><td></td><td></td></tr> </tbody> </table> </td> <td style="width: 30%; vertical-align: top;"> Substitutes <table border="1" style="width: 100%; border-collapse: collapse;"> <tr><td>1</td><td>2</td><td>3</td><td>4</td><td>5</td><td>6</td></tr> <tr><td>7</td><td>8</td><td>9</td><td>10</td><td>11</td><td>12</td></tr> <tr><td>13</td><td>14</td><td>15</td><td>16</td><td>17</td><td>18</td></tr> <tr><td>19</td><td>20</td><td>21</td><td>22</td><td>23</td><td>24</td></tr> </table> </td> </tr> </table>			Substitutes <table border="1" style="width: 100%; border-collapse: collapse;"> <tr><td>1</td><td>2</td><td>3</td><td>4</td><td>5</td><td>6</td></tr> <tr><td>7</td><td>8</td><td>9</td><td>10</td><td>11</td><td>12</td></tr> <tr><td>13</td><td>14</td><td>15</td><td>16</td><td>17</td><td>18</td></tr> <tr><td>19</td><td>20</td><td>21</td><td>22</td><td>23</td><td>24</td></tr> </table>	1	2	3	4	5	6	7	8	9	10	11	12	13	14	15	16	17	18	19	20	21	22	23	24	STARTING PLAYERS <table border="1" style="width: 100%; border-collapse: collapse;"> <thead> <tr> <th>Sets</th> <th>I</th> <th>II</th> <th>III</th> <th>IV</th> <th>V</th> <th>VI</th> </tr> </thead> <tbody> <tr><td>1</td><td>20</td><td>12</td><td>18</td><td>24</td><td>8</td><td>23</td></tr> <tr><td>2</td><td>12</td><td>18</td><td>24</td><td>8</td><td>23</td><td>20</td></tr> <tr><td>3</td><td>20</td><td>12</td><td>18</td><td>14</td><td>8</td><td>23</td></tr> <tr><td>4</td><td>12</td><td>18</td><td>14</td><td>8</td><td>17</td><td>20</td></tr> <tr><td>5</td><td></td><td></td><td></td><td></td><td></td><td></td></tr> </tbody> </table>	Sets	I	II	III	IV	V	VI	1	20	12	18	24	8	23	2	12	18	24	8	23	20	3	20	12	18	14	8	23	4	12	18	14	8	17	20	5							Substitutes <table border="1" style="width: 100%; border-collapse: collapse;"> <tr><td>1</td><td>2</td><td>3</td><td>4</td><td>5</td><td>6</td></tr> <tr><td>7</td><td>8</td><td>9</td><td>10</td><td>11</td><td>12</td></tr> <tr><td>13</td><td>14</td><td>15</td><td>16</td><td>17</td><td>18</td></tr> <tr><td>19</td><td>20</td><td>21</td><td>22</td><td>23</td><td>24</td></tr> </table>	1	2	3	4	5	6	7	8	9	10	11	12	13	14	15	16	17	18	19	20	21	22	23	24							
Substitutes <table border="1" style="width: 100%; border-collapse: collapse;"> <tr><td>1</td><td>2</td><td>3</td><td>4</td><td>5</td><td>6</td></tr> <tr><td>7</td><td>8</td><td>9</td><td>10</td><td>11</td><td>12</td></tr> <tr><td>13</td><td>14</td><td>15</td><td>16</td><td>17</td><td>18</td></tr> <tr><td>19</td><td>20</td><td>21</td><td>22</td><td>23</td><td>24</td></tr> </table>	1	2	3	4	5	6	7	8	9	10	11	12	13	14	15	16	17	18	19	20	21	22	23	24	STARTING PLAYERS <table border="1" style="width: 100%; border-collapse: collapse;"> <thead> <tr> <th>Sets</th> <th>I</th> <th>II</th> <th>III</th> <th>IV</th> <th>V</th> <th>VI</th> </tr> </thead> <tbody> <tr><td>1</td><td>20</td><td>12</td><td>18</td><td>24</td><td>8</td><td>23</td></tr> <tr><td>2</td><td>12</td><td>18</td><td>24</td><td>8</td><td>23</td><td>20</td></tr> <tr><td>3</td><td>20</td><td>12</td><td>18</td><td>14</td><td>8</td><td>23</td></tr> <tr><td>4</td><td>12</td><td>18</td><td>14</td><td>8</td><td>17</td><td>20</td></tr> <tr><td>5</td><td></td><td></td><td></td><td></td><td></td><td></td></tr> </tbody> </table>	Sets	I	II	III	IV	V	VI	1	20	12	18	24	8	23	2	12	18	24	8	23	20	3	20	12	18	14	8	23	4	12	18	14	8	17	20	5							Substitutes <table border="1" style="width: 100%; border-collapse: collapse;"> <tr><td>1</td><td>2</td><td>3</td><td>4</td><td>5</td><td>6</td></tr> <tr><td>7</td><td>8</td><td>9</td><td>10</td><td>11</td><td>12</td></tr> <tr><td>13</td><td>14</td><td>15</td><td>16</td><td>17</td><td>18</td></tr> <tr><td>19</td><td>20</td><td>21</td><td>22</td><td>23</td><td>24</td></tr> </table>	1	2	3	4	5	6	7	8	9	10	11	12	13	14	15	16	17	18	19	20	21	22	23	24										
1	2	3	4	5	6																																																																																																	
7	8	9	10	11	12																																																																																																	
13	14	15	16	17	18																																																																																																	
19	20	21	22	23	24																																																																																																	
Sets	I	II	III	IV	V	VI																																																																																																
1	20	12	18	24	8	23																																																																																																
2	12	18	24	8	23	20																																																																																																
3	20	12	18	14	8	23																																																																																																
4	12	18	14	8	17	20																																																																																																
5																																																																																																						
1	2	3	4	5	6																																																																																																	
7	8	9	10	11	12																																																																																																	
13	14	15	16	17	18																																																																																																	
19	20	21	22	23	24																																																																																																	
GAME JURY MATCH REPORT																																																																																																						
<table border="1" style="width: 100%; border-collapse: collapse;"> <tr> <td colspan="2">HEADLINE:</td> </tr> <tr> <td>MAX. TEMPERATURE:</td> <td>MAX. HUMIDITY:</td> </tr> <tr> <td colspan="2">REMARKS:</td> </tr> <tr> <td colspan="2">WINNING TEAM: NETHERLAND</td> </tr> <tr> <td colspan="2"> DOPING CONTROL (if applicable): N° of player drawn: Home <input type="text"/> Visiting <input type="text"/> Coach Team A: <input type="text"/> Coach Team B: <input type="text"/> </td> </tr> </table>		HEADLINE:		MAX. TEMPERATURE:	MAX. HUMIDITY:	REMARKS:		WINNING TEAM: NETHERLAND		DOPING CONTROL (if applicable): N° of player drawn: Home <input type="text"/> Visiting <input type="text"/> Coach Team A: <input type="text"/> Coach Team B: <input type="text"/>		<table border="1" style="width: 100%; border-collapse: collapse;"> <tr> <td colspan="2">SETS DURATION:</td> </tr> <tr><td>Set 1</td><td>27 min.</td></tr> <tr><td>Set 2</td><td>25 min.</td></tr> <tr><td>Set 3</td><td>38 min.</td></tr> <tr><td>Set 4</td><td>23 min.</td></tr> <tr><td>Set 5</td><td>min.</td></tr> <tr><td>Total</td><td>113 min.</td></tr> <tr> <td colspan="2" style="text-align: center;">CEV SUPERVISOR</td> </tr> </table>	SETS DURATION:		Set 1	27 min.	Set 2	25 min.	Set 3	38 min.	Set 4	23 min.	Set 5	min.	Total	113 min.	CEV SUPERVISOR																																																																											
HEADLINE:																																																																																																						
MAX. TEMPERATURE:	MAX. HUMIDITY:																																																																																																					
REMARKS:																																																																																																						
WINNING TEAM: NETHERLAND																																																																																																						
DOPING CONTROL (if applicable): N° of player drawn: Home <input type="text"/> Visiting <input type="text"/> Coach Team A: <input type="text"/> Coach Team B: <input type="text"/>																																																																																																						
SETS DURATION:																																																																																																						
Set 1	27 min.																																																																																																					
Set 2	25 min.																																																																																																					
Set 3	38 min.																																																																																																					
Set 4	23 min.																																																																																																					
Set 5	min.																																																																																																					
Total	113 min.																																																																																																					
CEV SUPERVISOR																																																																																																						

26 LiteScore

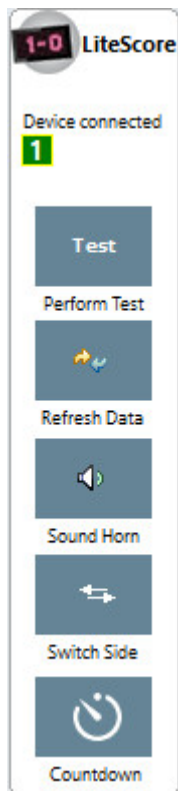
LiteScore is a portable two faced led scoreboard that can be used at all levels and can display scores in all kind of conditions.



LiteScore is a plug&play device: the Lite Score buttons will automatically appear in the e-Scoresheet window when connected to the computer using e-Scoresheet.



Five buttons will appear on the right side of the Screen:



Click this button to check the Device connected.


Click this button to refresh Data displayed By the LiteScore.

Click this button to send an audio signal to the acoustic device.

Click this button to invert the position of the team on the LiteScore.

Click this Button to start a Countdown.



Use the Button  to show on the LiteScore the Player who serves.

Led Score displays the official score, the winning sets, the number of time outs and substitutions. You can control events thanks to the wireless remote control and can also be used during training. It can be used for example to display the score in specific situations (i.e. wash drills), recall player's attention, and much more.

It is used to control events during a match and during training.

27 Warranty

WARRANTY RESTRICTIONS

Genius Sports Italy S.r.l. is not responsible for loss, damaged or a non correct use of the software.

Genius Sports Italy S.r.l. will not be liable for any direct or in direct damages caused by the use of the software products.

CONSUMER PROTECTION

In the event of problems related to the software, the responsibility and the sole solutions will be at the discretion of Genius Sports Italy S.r.l.:

The repair or replacement of the software;

The warranty becomes void when the software problems are caused by accidents, incorrect use or misapplication of the product..

PROCEDURES TO FOLLOW

During the warranty validity, please contact our technical support department on 0039 089 6307845 or send us an email volleysupport@geniussports.com, in the event of performance problems of the program.

Our customer service lines are open, from 9,30 to 1:00 pm and from 3:00 pm to 6pm, Monday to Friday, except public holidays

The technical support service is limited to the use of the software procedures and whenever possible a direct problem solving consultation.

Should our customer service department not be able to solve the problems, please send a written request directly to Genius Sports Italy S.r.l., detailing the error the steps that led to it, and when possible, a copy of the file archive that caused the problem; Genius Sports Italy S.r.l. will endeavor to examine the problem and update the company website www.dataproject.com with the modified software procedures.

ADDITIONAL WARRANTY SERVICE

The client, during the warranty validity, can download all relative updates for the purchased software version from the Genius Sports Italy S.r.l. website www.dataproject.com